



## E. Monitoring nieuwe plagen

- Rhizomanie
- Bietenmot
- Syndrome des basses richesses (SBR)

# Rhizomanie

Rhizomanievirus: *Beet necrotic yellow vein virus* (BNYVV)

Vector: *Polymyxa betae*

🔍 Tetrade AYPR ?



Rhizomaniedruk	Resistentiegen
Normaal	Rz1
Sterke (AYPR)	Rz1 + Rz2



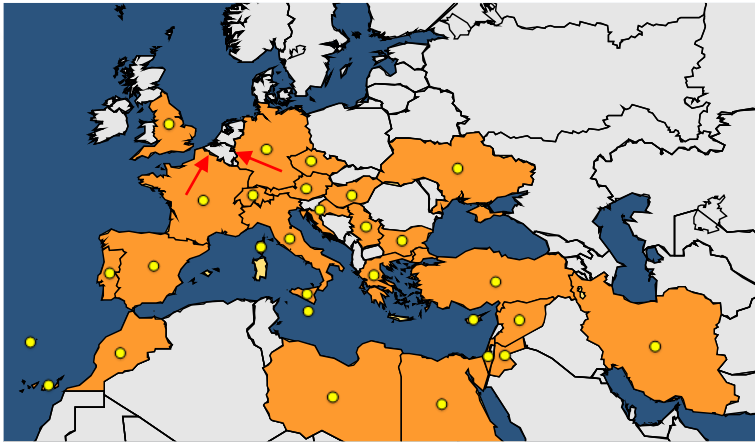
KBIVB-IRBAB



KBIVB-IRBAB

# Bietenmot

Latijnse naam: *Scrobipalpa ocellatella*



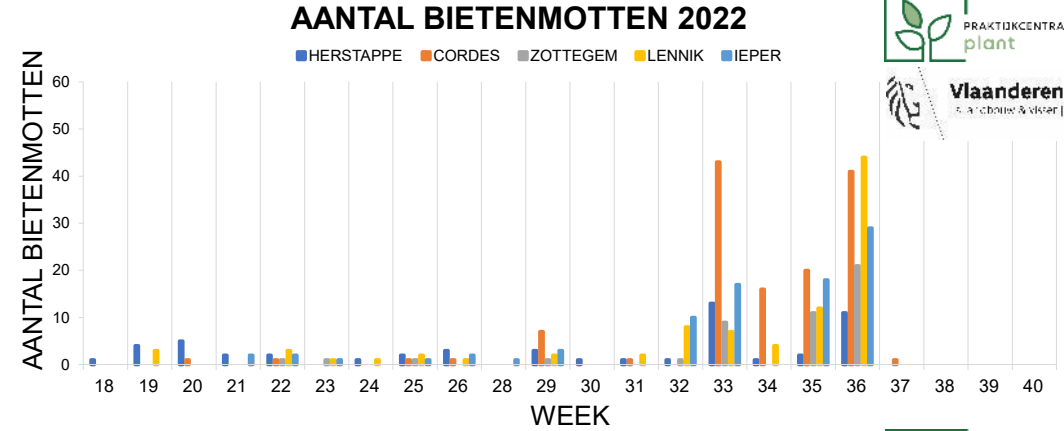
EPPO 2011



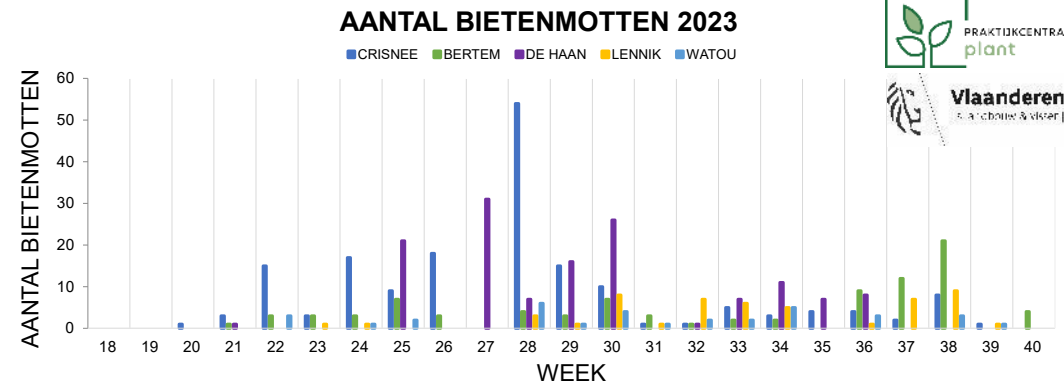
KBIVB-IRBAB 2023



2022



2023



2024

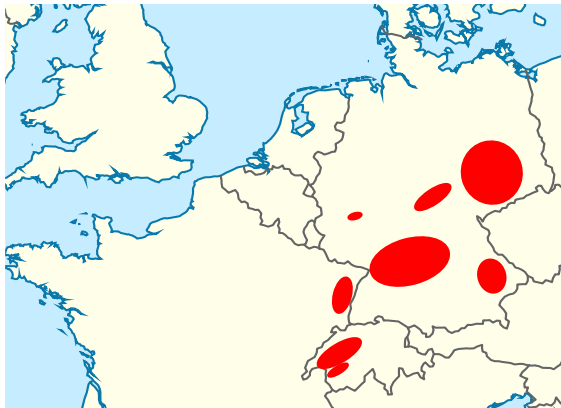


<https://forms.gle/7JvK5LpG62hmqdrt6>

# Syndrome des basses richesses (SBR)

## Pathogene bacteriën:

- SBR-proteobacterium: *Candidatus Arsenophonus phytopathogenicus*
- SBR-phytoplasma: *Candidatus Phytoplasma solani*

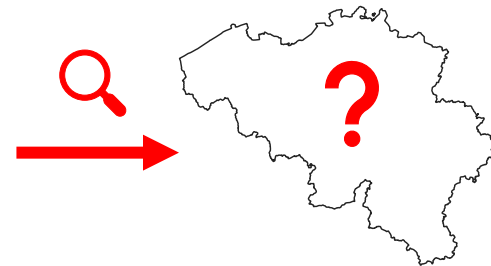


● Aanwezigheid van SBR

## Vector: *Pentastiridius leporinus*



Pfitzer et al. 2022



Gezonde plant

Met SBR geïnfecteerd

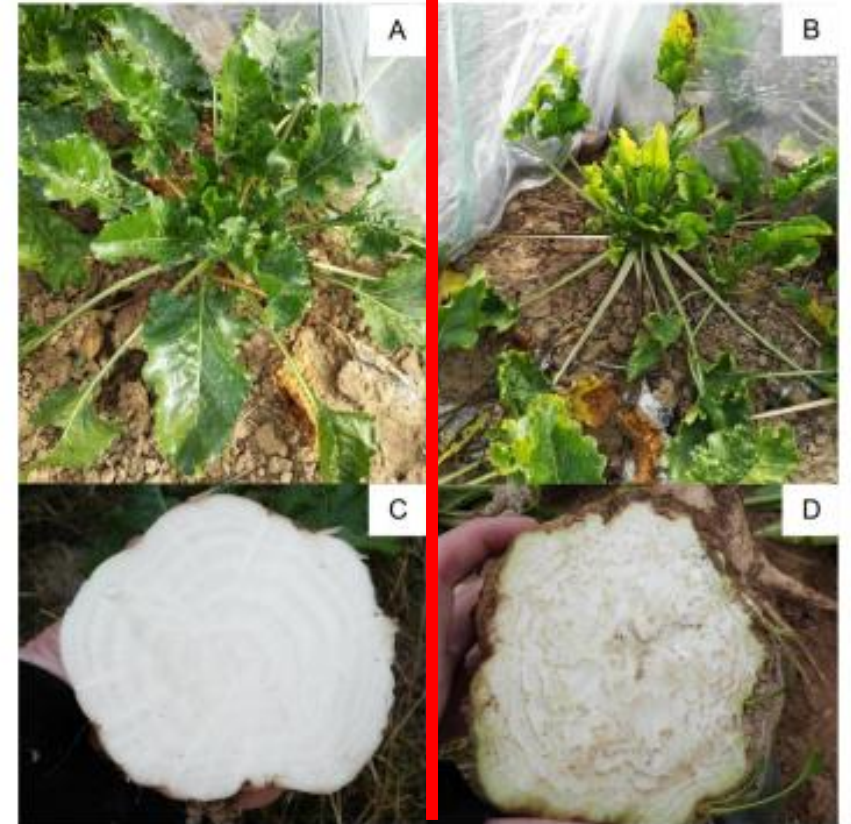


Figure 1 Comparison of field grown SBR free (A, C) sugar beets and plants showing typical SBR symptoms on the leaves such as chlorotic or necrotic older leaves and asymmetric younger leaves (B) and necrosis in the vascular bundles of the taproots (D) in Baden-Württemberg.

## Samenwerking: